

for a better
tomorrow...



HIGH
SPEED
DOORS



BMP HIGH SPEED DOORS: DRIVING SUSTAINABILITY WITH ENVIRONMENTALLY FRIENDLY PRODUCTS AND PRACTICES

Companies are increasingly prioritizing environmental concern and sustainability. In this context, BMP' products serve as essential tools for implementing an environmentally sustainable corporate policy.

They enable businesses to align their practices with environmental objectives and contribute to a more sustainable future. BMP has undertaken a project to implement both the occupational health and safety management system DIN ISO 45001 and the environmental management system DIN ISO 14001 by the first quarter of 2024. Additionally, we are dedicated to achieving CO2 neutrality across all our production sites.

BMP is fully committed to attaining carbon neutrality by 2045. To ensure progress, we have developed a comprehensive plan and closely monitor its implementation. By setting targets that are five years ahead of those established by the European Commission, we demonstrate our determination to lead in environmental sustainability.

-300^{tons} CO₂





Click this link:

[TOWARDS A SUSTAINABLE FUTURE.](#)

or scan the QR code.

CARBON FOOTPRINT OF OUR PRODUCTS

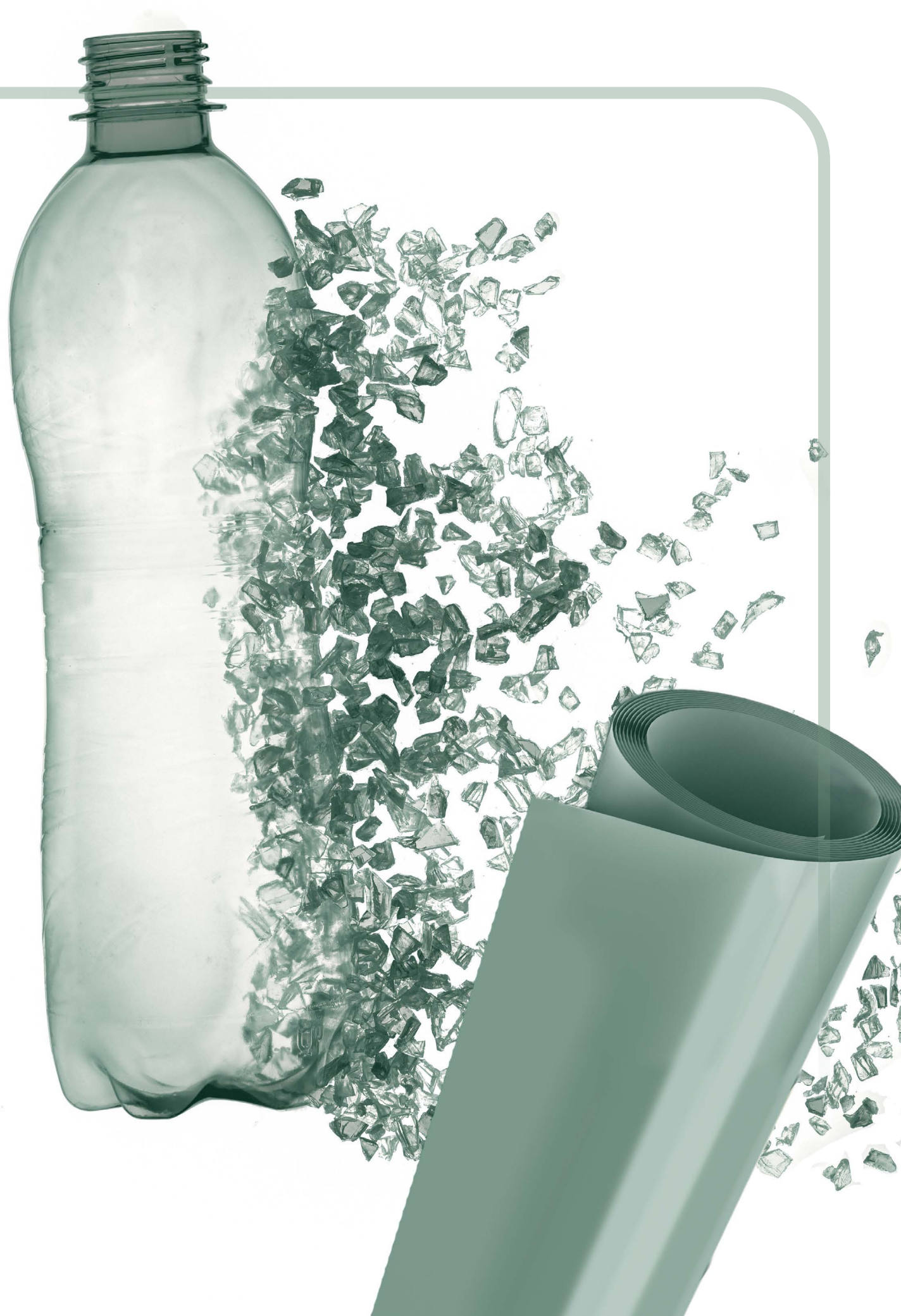
We acknowledge the challenges in obtaining precise environmental footprint data for our products due to the complexity of collecting specific information about raw materials and processes.

However, we have established reliable calculation parameters that enable us to determine the average CO₂ emissions associated with our product production, including raw materials.

Currently, our products contribute approximately 2.3 kg of CO₂ equivalent emissions per square meter. It's important to note that these calculations incorporate data provided by our suppliers.

As part of our commitment to environmental sustainability, our company places great emphasis on producing clean energy. By installing solar panels, we can generate clean and renewable energy, reducing greenhouse gas emissions and actively fighting climate change.

Through this approach, we estimate that our efforts result in a reduction of 300 tons of CO₂ emissions per year, which has a significant impact on the environment



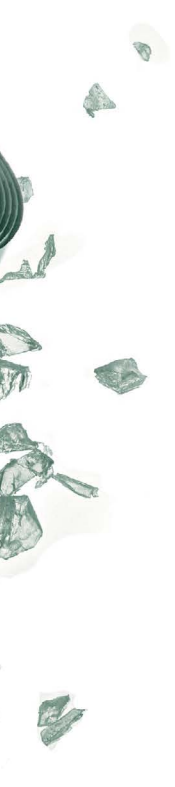
RECYCLING COMPONENTS

By partnering with the BMP High Speed Doors, businesses have the opportunity to minimize the environmental impact of their operations, enhance energy efficiency and achieve cost reductions.

We take great pride in our ability to provide components, such as the polyester curtain, that are crafted using a substantial proportion of recycled materials.

This accomplishment is made achievable through the implementation of a mechanical recycling process and the utilization of a fabric that is composed of recycled yarns. These yarns are derived from PET bottles that have surpassed their initial purpose as beverage containers.

This serves as another remarkable illustration of our dedication to incorporating recycled raw materials into our value creation process.





Recycle Bag



Sustainable Materials Recycle Eco-Friendly Zero Waste



Recycle Bag



Sustainable Materials Recycle Eco-Friendly Zero Waste



MINIMIZE RESOURCE CONSUMPTION

Our current production processes generate minimal waste due to our efficient operations. To further avoid waste, we prioritize recycling production waste. Through continuous efforts, we strive to leverage cutting-edge technologies to transform these scraps into valuable raw materials for producing recycled PVC bags. This initiative is an integral part of our commitment to minimizing resource consumption and promoting sustainable practices.

Establishing a waste management policy is an essential step in building a business that is more sustainable and environmentally friendly as a whole.

WASTE MANAGEMENT HIERARCHY

PREVENTION

REDUCTION

RECYCLE

RECOVERY

DISPOSAL

Most preferred

Least preferred



WASTE MANAGEMENT

Our company implements a waste management policy focused on reducing and recycling production waste.

There are various strategies for handling production waste, including selling it to third parties or repurposing it to create new products. The ultimate objective is to convert waste into valuable and sustainable resources, thereby contributing to the establishment of a circular economy.

By adopting such practices, we strive to minimize waste and maximize resource efficiency, promoting a more sustainable and responsible approach to production.



REDUCE

RE-USE

RECYCLE

PRIORITIZING WASTE REDUCTION AND RECYCLING

Establishing a company policy that prioritizes waste reduction and the recycling of processing waste is crucial for the production of environmentally sustainable products.

This approach not only mitigates environmental impact but also has the potential to lower production costs.

Opting for durable materials like sustainably sourced steel, aluminum, or recycled PVC contributes to the creation of long-lasting products that require minimal replacement.

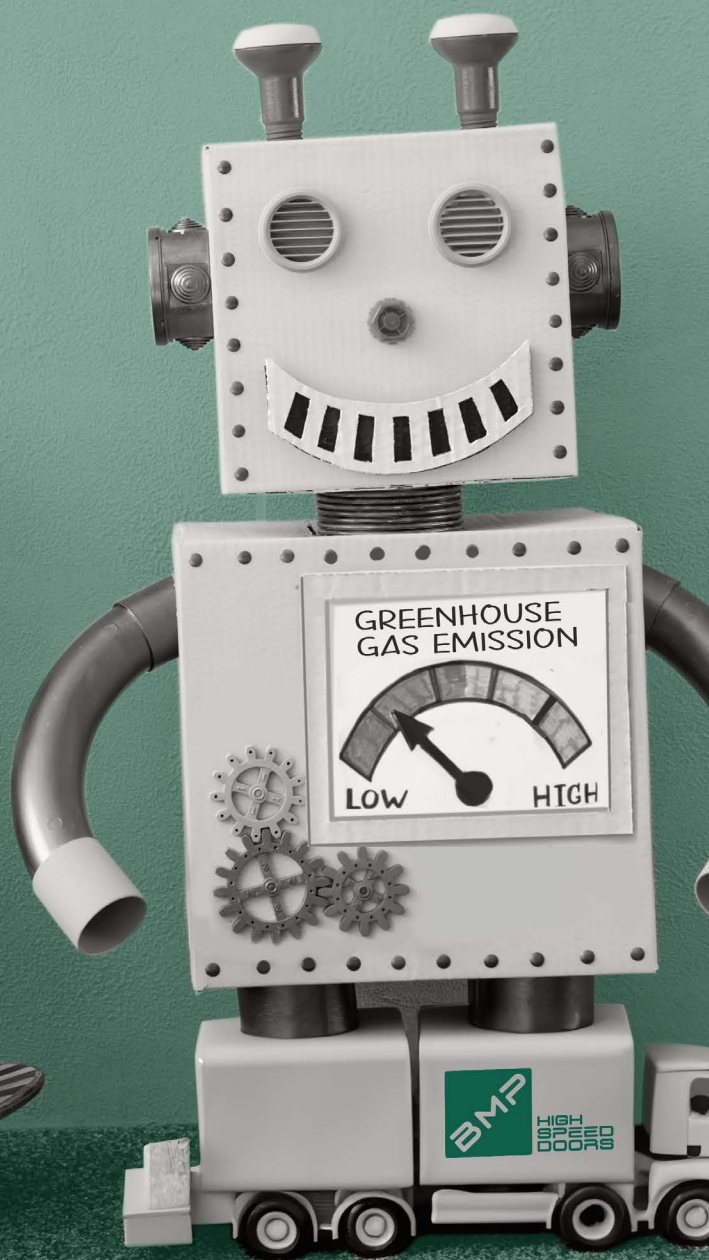


ECONOMIC BENEFITS

Moreover, the durability of environmentally sustainable products not only reduces their environmental footprint but also results in cost savings for customers, who won't need to frequently replace their purchased items.

Adopting an environmentally sustainable corporate policy is not only beneficial for the environment but also brings economic advantages for both the company and its customers.

By manufacturing durable and environmentally friendly products, we take a significant stride towards a more sustainable future that benefits everyone involved.



GREEN SHIPPING

We offer green shipping to all our customers, as part of our commitment to environmental protection.

Our comprehensive environmental protection program includes a range of climate protection projects designed to offset greenhouse gas emissions generated during transportation.

The best part is that this offsetting is provided to our customers at no additional cost.





PAVING THE WAY FOR A BRIGHTER AND MORE PROMISING TOMORROW.

At BMP High Speed Doors, our pursuit of sustainability drives every product we develop and manufacture, empowering us to contribute significantly to a greener and more sustainable world.

Through ongoing investments in innovation, waste management, and energy-saving initiatives, we are determined to build a sustainable and environmentally conscious future.

We are resolute in our commitment to preserve nature and ensure a brighter future for generations to come, fueling our determination to create a better world for all.



HIGH
SPEED
DOORS

Strada della Freisa 1
14019 Villanova D'Asti (AT) Italy
tel: +39 0141 948843
www.bmpdoors.com